





The integration of quality, efficiency, and cost saving.
Introducing the latest revolutionary printer, the U2-Diesel.

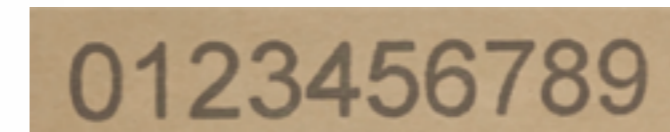
| Comparison Items | U2-Diesel Ink Jet Printer | LCP Large Character Printer |
|----------------------------------|---------------------------|-----------------------------|
| 1. Lower printer cost | ✓ | - |
| 2. Higher print resolution | ✓ | - |
| 3. Higher print speed | ✓ | - |
| 4. No ink leakage | ✓ | - |
| 5. No-maintenance | ✓ | - |
| 6. No consumable parts | ✓ | - |
| 7. No technician required | ✓ | - |
| 8. Lower price-per-print | ✓ | - |
| 9. Lower total cost of ownership | ✓ | - |

U2TM
DIESEL

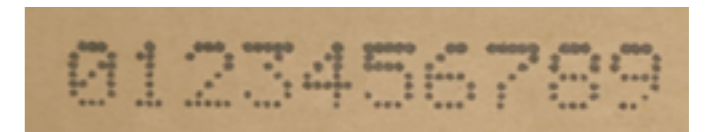


Print more, Save more !

- Equivalent Print to 5-Gallon Ink Barrel
- Exclusive Ink Formulation
- Cost-effective 420 Bulk Ink Solution



Printed by U2-Diesel



Printed by Large Character Printer



U2-Diesel Specifications:

| | |
|--------------------------------|--|
| Display | 3.5" Color LCD with LED backlight |
| User-interface | Simple and easy-to-use operating system |
| Input Device | Pocket-sized IR remote keypad |
| Available Languages | English, Japanese, French, German, Spanish, Portuguese, Russian, Korean, Italian, Turkish, Hungarian, Slovak, Czech, Swedish, Romanian, Serbian, Bulgarian, Chinese (Traditional & Simplified) |
| LED Indicators | Alarm, Ink low, print, run, remote on/off |
| Print Engine | Hewlett-Packard Thermal Ink Jet technology |
| Print Resolution & Print Speed | 600 x 300 dpi (76.2 m/min) Print quality is resolution & speed dependent. |
| Print Distance | Recommended 6mm |
| Print Height | Up to 4 lines and 12.7mm (0.5"). Selectable font size from 2.7mm, 3.6mm, 5.5mm, 8mm, 10mm, 12.7mm |
| Print Capability | Alphanumeric, logos, date/time, shift code, counter, lot box code |
| Barcodes | EAN8, EAN13, EAN14, EAN128, UPCA, UPCE, CODE39, CODE128, TF14 (SCC-14), NVE18 (SSCC-18), C25INTER, CODABAR, PDF417, DATAMATRIX, QR CODE |
| Electrical Requirements | AC 100V~240V, 50/60Hz |
| Weight | 0.49kg (1.08 lb.) - excluding cartridge and bracket |
| Dimensions (L/W/H) | 114x76x60 (mm) |
| Mounting Orientation | Horizontal or downside |
| Message Storage Capacity | Store up to 999 messages |
| Operating Temperature | 5°C – 40°C (41°F – 104°F) |
| Data Interface | RS485 & USB port |

Optional Accessories:

| | |
|-----------|---|
| Encoder | Provide high print quality on unstable conveyor |
| Photocell | Provide more reliable and precise sensing parameter |
| Alarm Kit | Alert users in the event of an incident |



WWW.ANSER-U2.COM